

**PAID YOUR SUBSCRIPTION YET?
THE CLOSING DATE FOR ANY DISCOUNT HAS NOW
PASSED. SUBSCRIPTIONS ARE NOW DUE
AT THE FULL £14 RATE**

Bassetlaw and District Umpires' Association

**April
2009**

NEWSLETTER

Website: www.bdua.co.uk

An Important Notice to all Umpires

You will all know that the League is desperately short of umpires. We need to recruit new umpires. If you have any thoughts on this your Committee is always willing to consider all new ideas.

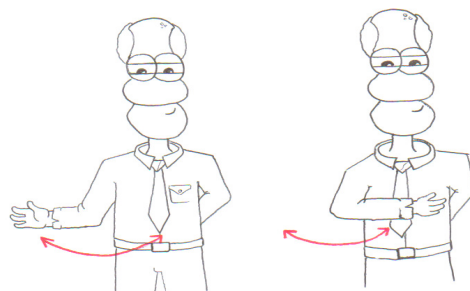
URGENT MALLEN TROPHY : UMPIRES REQUIRED

It is now the responsibility of the Hon Umpires Appointments Secretary, John Leaning, to make all appointments of umpires to Mallen Trophy matches.

32 members have already indicated that they are prepared to officiate in these matches. However there have been changes to the competition rules that may limit their availability. These matches are now scheduled to be played on Tuesday evenings starting at 6.15 to 6.30pm on June 2nd, 9th, 16th, 23rd and 30th. The semi finals and final to be played at Edwinstowe and Thoresby Colliery on 12th July. Because of these changes John is unsure if all 32 Umpires already prepared to stand are still available, hence the request for more Umpires. If you have not already done so and are prepared to stand please let John know as soon as possible to enable him to include you on any rota. The umpires expenses are £12 per match. All rule changes will be published in the League Handbook.

NEW BOUNDARY 4 SIGNAL

The new signal is as follows; place the out stretched arm to the side, with the palm facing the scorers, move the arm across the body several times, finishing with the arm across the chest . As illustrated opposite.



STOCK UP FOR THE 2009 SEASON: available from the Secretary
30 x 60-over Match Cards £3-00 + 47p postage. Association Tie £10-00 + postage.
Standard Bails £5-00 + 34p postage. Association Coat Badge £4-00 + postage. Umpire's Counter £8-50 + postage Bowler's marker £0.50 each + postage. 2003 edition of the 2000 Code: Laws of Cricket £2-50 + postage . Tom Smith £10-00 + £1.75 postage. (Unless otherwise stated, postage 21/30p)

ASSESSMENT

Assessment has been with us for several years now. With the ECB now responsible for all Umpire training, assessment has become the main factor in advancement to a higher standard of cricket for Umpires. Any member may request to be assessed, either to qualify for a higher standard of cricket in the Bassetlaw League or to seek nomination to the Nottinghamshire (or other) Premier League. Contact the Secretary in the first instance. It is also imperative that Captains in the Championship and Division 1 complete their assessments of Umpires. You should at the end of the match remind Captains of your name and number to enable them to complete fully their assessment it would also act as a reminder to them to complete the assessment. .

Changes to MCC Laws—LAW 6: THE BAT With effect from 1st October 2008

The following is an extract from MCC Law 6 A guide to Umpires. It is NOT comprehensive.

The umpire's duty under Law 3 to ensure the implements of the game conform to the requirements of, among other Laws, Law 6 cannot extend beyond visible features of the bat. Moreover umpires could not reasonably make measurements and/or calculations required for checking even some visible items. **Consequently, the onus has been placed on manufacturers to ensure that their bats conform to the new law and are correctly graded.** There will be random sampling of bats to check on these aspects of manufacture. **In other words the umpire is NOT expected to check any bat.** Any bat that was illegal under the previous version of Law 6 (2000 Code, 2nd Edition—2003) remains illegal under the new version and must not be used in any cricket played under the laws.

Umpires will be responsible for seeing that:

- The overall length and width of the bat are within the specified limits.
- Any covering on the blade does not have a surface likely to cause unacceptable damage to the ball.
- Nothing other than wood is visible in the blade itself.
- The grade of bat is allowed at the level of the game being played.
- There are no side inserts or toe inserts in Grade A bats. A toe insert is a strip of wood inserted into the blade at the bottom to give added strength in that area. It should not be confused with a toe guard, an external strip of protective material fastened onto the underside of the toe, as protection against damage if the toe strikes the ground and to prevent moisture ingress. These added strips are allowed in all grades of bat.
- Only Grade C bats have cloth coverings.

RULE CHANGES IN THE BASSETLAW LEAGUE

There have been several rule changes at the AGM and you are strongly advised to study your League Handbook. They will be highlighted in the usual way with a bold line at the side of the text. I know all of you will do this as a matter of course but it is my responsibility as your Secretary to remind you.